



29 Hillside Avenue

Kidsgrove, ST7 4LW

Price £215,000



Carters are proud to present this beautifully appointed detached family home, offering an outstanding opportunity for first-time buyers and growing families seeking space, style, and convenience.

From the moment you enter, the property impresses with a bright and spacious living room, featuring a charming bay window to the front that floods the space with natural light. Elegant double doors seamlessly connect the lounge to the stunning kitchen/dining area, creating a superb open and sociable layout ideal for modern family living and entertaining.

The heart of the home is the impressive shaker-style kitchen, finished to a high standard with solid wood butcher block worktops and integrated appliances. The dining area flows effortlessly through patio doors into the rear garden, perfect for summer gatherings, barbecues, or simply relaxing in your own private outdoor space.

Upstairs, the property continues to deliver with three generously sized bedrooms, offering flexibility for family life, guests, or a dedicated home office. A three-piece family bathroom completes the accommodation.

Externally, this home truly stands out with off-road parking for up to three vehicles and a South facing tiered rear garden, providing excellent usable outdoor space with scope for landscaping and personalisation.

Ideally positioned close to a range of local amenities, the property offers everyday convenience on your doorstep. Families will particularly appreciate the proximity to well-regarded schools, while the nearby Bath Pool Country Park provides a beautiful natural escape for walking, recreation, and leisure.

A fantastic turnkey home in a highly desirable location—early viewing is strongly advised to avoid disappointment.

29 Hillside Avenue

Kidsgrove, ST7 4LW

Price £215,000



Entrance Hallway

UPVC double glazed entrance door to the front elevation. Radiator. Stairs to the first floor. Laminate flooring.

Living Room

13'9" x 12' (4.19m x 3.66m)

UPVC double glazed bay window to the front elevation. Double glazed doors leading to the dining area. Under stairs storage cupboard. Panel radiator. TV point.

Kitchen / Dining Room

15'2" x 8'7" (4.62m x 2.62m)

UPVC double glazed entrance door to the rear elevation. Full height UPVC double glazed window to the rear elevation. UPVC double glazed window to the rear elevation.

Stunning shaker style fitted kitchen having a range of wall, base and drawer units. Solid wood butcher block work surfaces. Resin inset sink with a mixer tap and a drainer. Built in double electric oven / grill. Four ring gas hob with extractor hood over. Integrated dishwasher. Recessed ceiling down lighters. Laminate flooring.

Walk in pantry -

Space and plumbing for a washing machine. Space for a fridge freezer. Solid wood butcher block work surface. Laminate flooring.

Stairs and Landing

Access to the loft which is fully

boarded and has a light. Airing cupboard.

Bedroom One

11'2" x 9' (3.40m x 2.74m)

UPVC double glazed window to the front elevation. Radiator.

Bedroom Two

7'1" x 11'5" (2.16m x 3.48m)

UPVC double glazed window to the rear elevation. Built in wardrobe. Radiator.

Bedroom Three

6'4" x 5'10" (1.93m x 1.78m)

UPVC double glazed window to the front elevation. Radiator.

Bathroom

UPVC double glazed window to the rear elevation.

Three piece fitted bathroom suite comprising of; a panel bath with shower over, pedestal wash hand basin and a mid level w.c. Partially tiled walls. Extractor fan. Heated towel rail. Vinyl flooring.

Externally

To the front of the property is a block-paved driveway providing off-road parking for up to three vehicles, along with a side gate giving access to the rear garden. The south-facing rear garden is tiered and mainly laid to lawn, offering a pleasant outdoor space.

Additional features include an external tap to the side of the property and a double outdoor power socket to the rear.

Additional Information

Freehold.

Council Tax Band: C

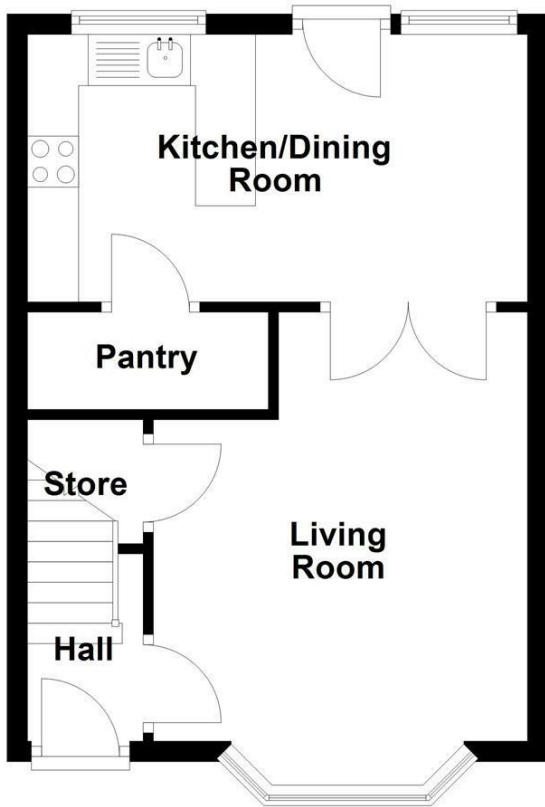
Total Floor Area: 688 Square Foot / 64 Square Meters.

Disclaimer

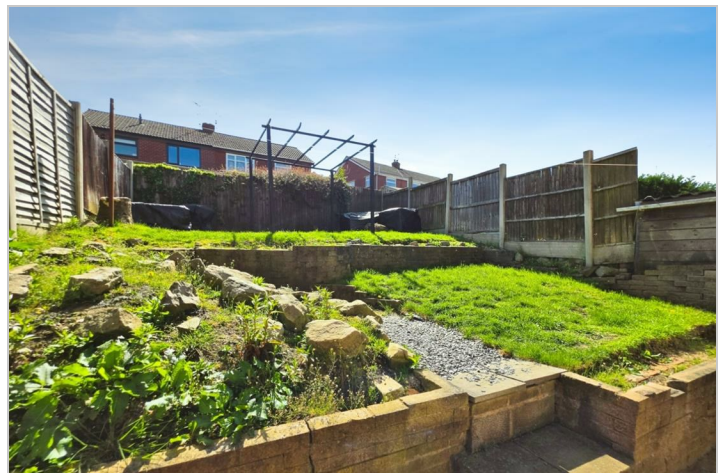
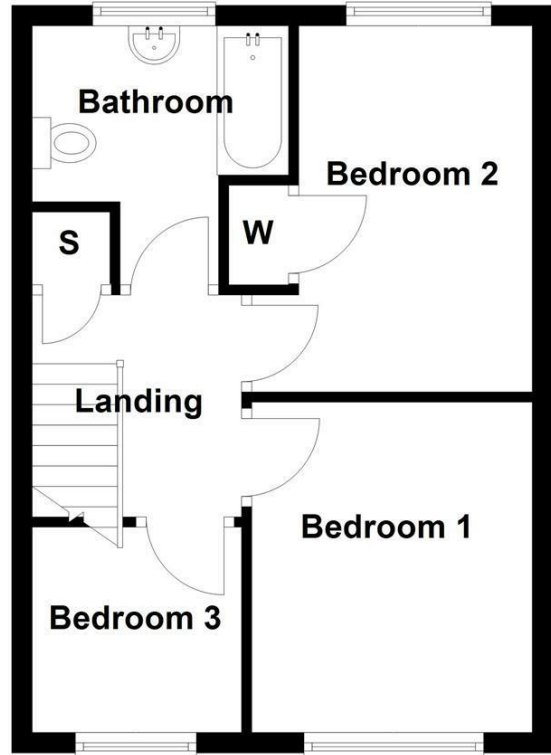
Although we try to ensure accuracy, these details are set out for guidance purposes only and do not form part of a contract or offer. Please note that some photographs have been taken with a wide-angle lens. A final inspection prior to exchange of contracts is recommended. No person in the employment of Carters Estate Agents Ltd has any authority to make any representation or warranty in relation to this property. We obtain some of the property information from land registry as part of our instruction and as we are not legal advisers we can only pass on the information and not comment or advise on any legal aspect of the property. You should take advise from a suitably authorised licensed conveyancer or solicitor in this respect.

Tel: 01782 470391

Ground Floor



First Floor



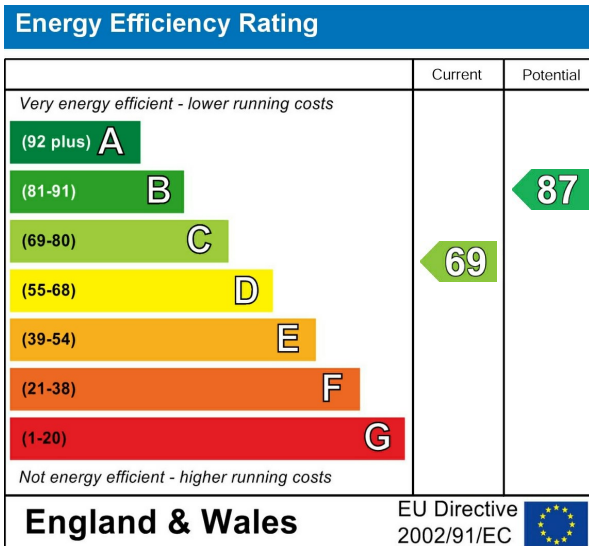
Road Map



Hybrid Map



Energy Efficiency Graph



Viewing

Please contact our Carters Estate Agents Office on 01782 470391 if you wish to arrange a viewing appointment for this property or require further information.

These particulars, whilst believed to be accurate are set out as a general outline only for guidance and do not constitute any part of an offer or contract. Intending purchasers should not rely on them as statements of representation of fact, but must satisfy themselves by inspection or otherwise as to their accuracy. No person in this firm's employment has the authority to make or give any representation or warranty in respect of the property.

101 High Street Biddulph Stoke on Trent Staffs ST8 6AB
01782 470391
www.carters-estateagents.co.uk